



MULTIFILM® stands for high quality interior sun protection, for most pleasant room climate and good light and visibility conditions.

- Technology**
- Made-to-measure blinds on customer requirements
  - Large-format façade systems
  - Opposite pull blinds
- Material**
- Transparent, reflective polyester films
  - Technical textiles
  - Printed films for outdoor advertising, interior decoration
- Features**
- Effective protection against solar heat
  - Optimal glare protection
  - Free view to the outside

High **quality** made in Germany.  
**Consulting, measurement and assembly** in one hand.

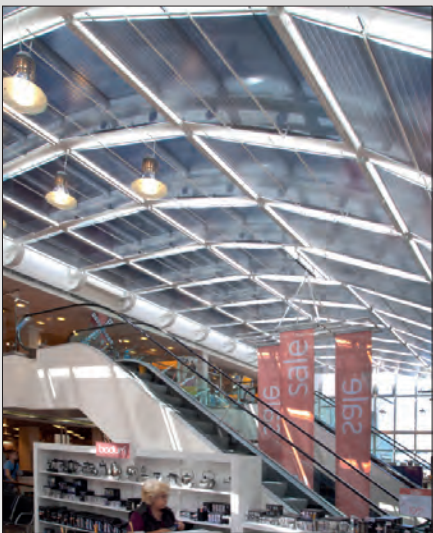
- individual product customization and special solutions
- energy consulting
- project Support



- Interior film blinds**
- Optimal glare protection
  - Transparency, daylight use
  - Effective sun protection

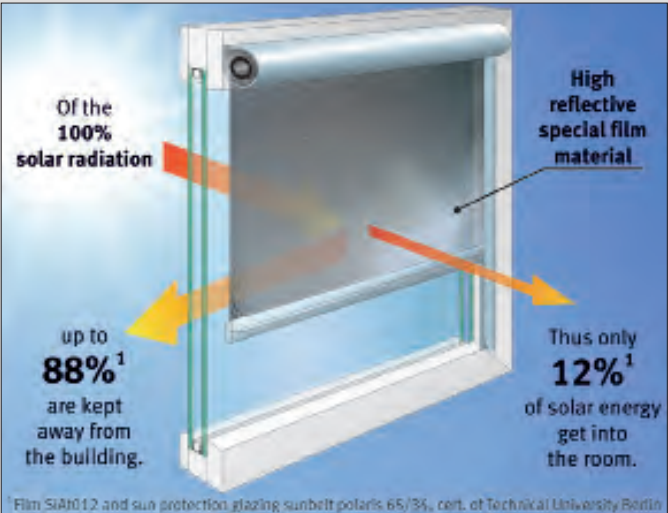


- Ergonomic and economical**
- Energy saving
  - Robust, durable, maintenance-free
  - Workplace optimization

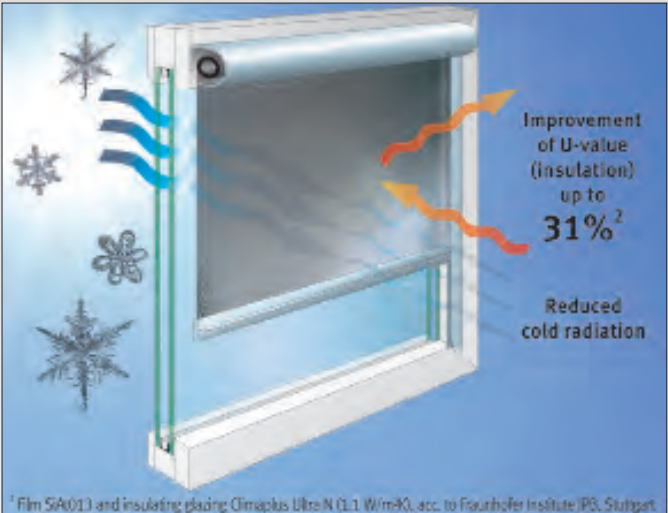


- Creativity on measure**
- Wide modular system
  - Easy retrofitting
  - Facade integration

How film roller blinds work

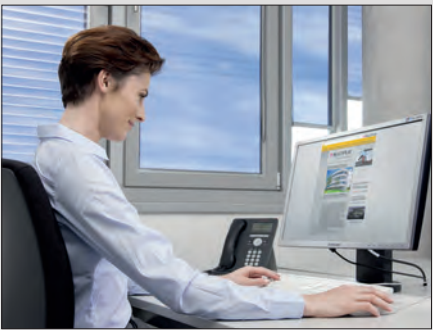


- Film dampens daylight like sunglasses
- Reliable glare protection
- Avoids high luminance differences
- Clear, distortion-free view to the outside

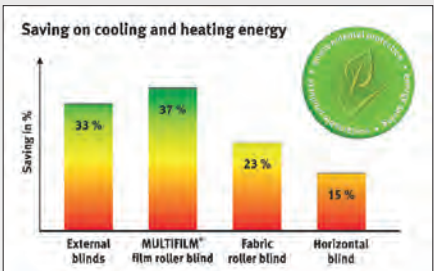


- Reflection of sunrays by aluminum coating directly back to outside
- Effective heat protection and energy saving
- Pleasant room climate

Glare protection • good light conditions • well-being climate • energy saving



- Ergonomics**
- Optimal glare protection
  - Good light and visibility conditions
  - Pleasant room climate
- Facility management**
- Easy to retrofit
  - Robust durable design
- Energy saving**
- Effective heat protection in summer
  - Better insulation in winter



- Improvement of energy efficiency**
- energy expenditure
- Without film roller blind*  
Heating: C  
Cooling: C
- With film roller blind*  
Heating: B  
Cooling: A
- MULTIFILM film roller blind with film SiAt012, triple layered sun protection and thermal insulation glass, energy label of ift Rosenheim

Stylish with technical textiles



- Technical Textiles**
- Functional textiles, such as Trevira CS
  - Opaque to semi-transparent
  - Different colors and light transmissions
  - Fire protection class: B1 (hardly inflammable)
  - High lightfastness (class 5-6)
  - Aluminum, nacre coatings
  - Pollutant tested according to Oeko-Tex Standard 100
  - Partly sound-absorbing and antibacterial

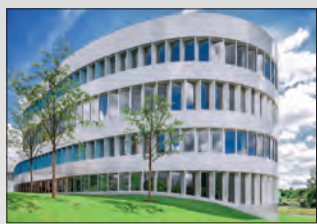
Sun protection combined with advertising or as design element



- MULTIDECOR Screen<sup>+</sup>**
- Sublimation
  - High lightfast
  - 100% abrasion resistant
- Outdoor advertising**
- Logos
  - Claims & slogans
  - Individual printing
- Residential design**
- Decor selection or according to template
  - Photos and logos
  - Wide color range



## References worldwide



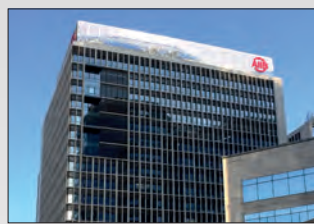
ZVE, Stuttgart



Bayernwerk, Regensburg



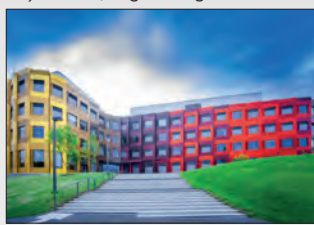
European Court of Justice, Luxembourg



Asian Infrastruct. Invest. Bank, Beijing



MID, Nuremberg



Research center, Gießen



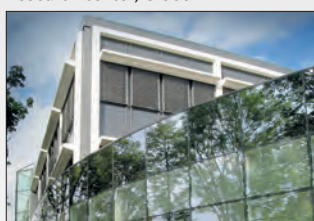
Airport Tower London Heathrow



Residential buildings, Vienna



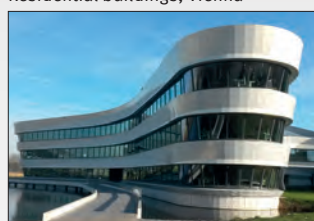
Patent office, Munich



Giesecke & Devrient, Munich

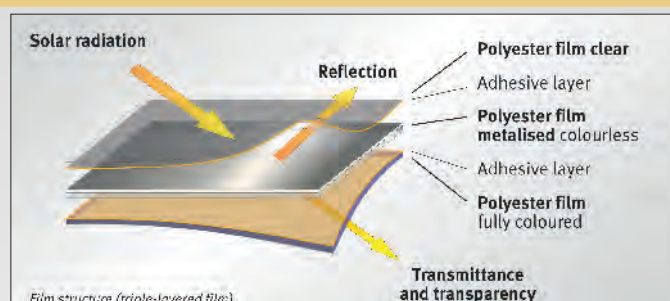


Airport Zurich



Deltares, Netherlands

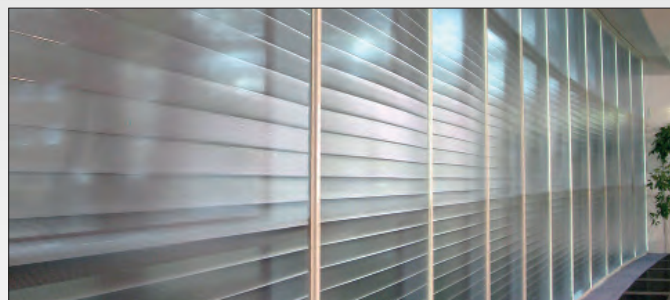
## Technology



Functional transparent polyester film



High quality surface embossing process



MULTIWAVE® pleating for high surface stability



MULTIDECOR-Screen® sublimation print

## Building automation | Facility management



Integration in building services, Smart Building solutions



Designed for public areas, sturdy, durable

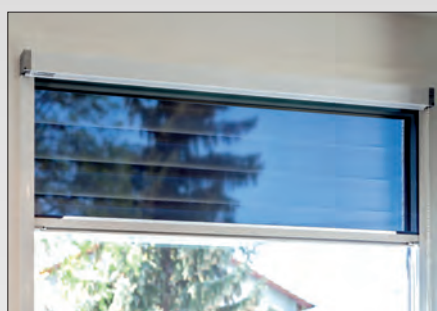


Various control options, radio remote control



Integration in facade planning or retrofitting

## Products



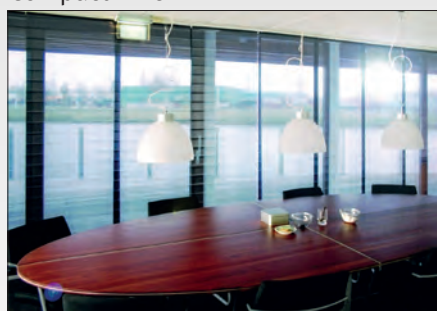
Compact-Line



Classic-Line



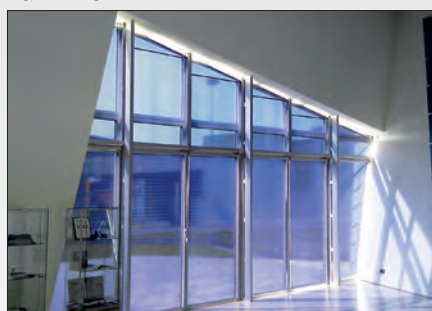
Lux-Line



Panel blind systems



Roller blinds for skylights



Solutions for special shapes

## Integrated system solutions



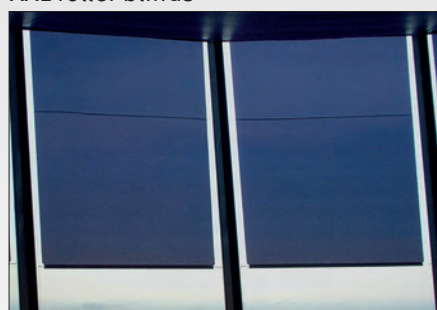
XXL roller blinds



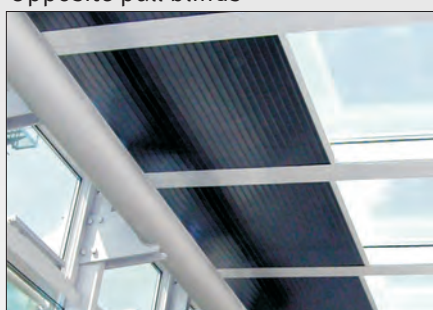
Opposite pull blinds



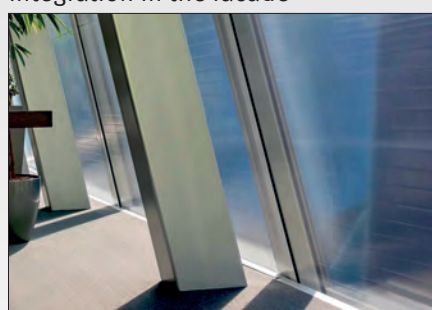
Integration in the facade



Welding of film



Solutions for roof windows



Ceiling resp. floor integration

## Sun and glare protection *without drawbacks*

